

How To Set Up The AquaTru Connect App

Steps To Connect AquaTru

Connect AquaTru to your WiFi before you install filters and run water through AquaTru. Once AquaTru is connected to your WiFi, follow the setup instructions in the user manual to complete your installation of AquaTru.

Please make sure you have the name of your WiFi network & password available.

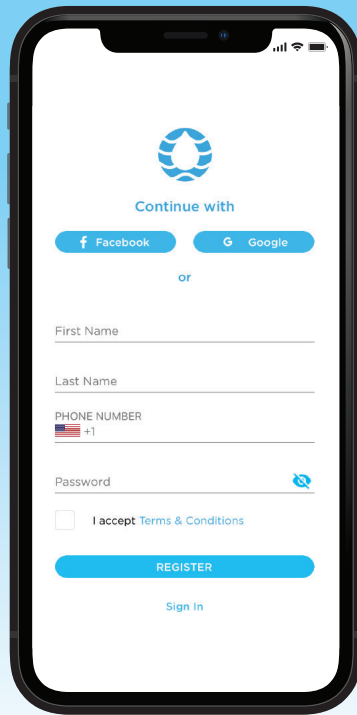
1 Set up an account

- Download and install the Apple or Android AquaTru app.



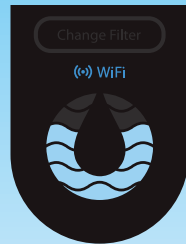
- Open the AquaTru app click on **"Create An Account"**.

iPhone® / Android®
Install Video



2 Connect to the AquaTru Water Purifier

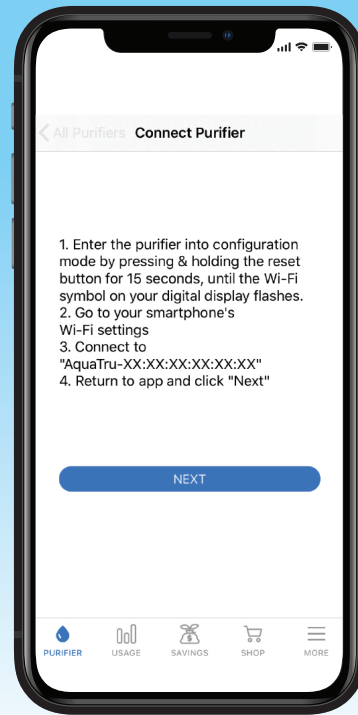
- Before connecting the AquaTru unit to your phone, plug in AquaTru and turn the machine on, (without water in it). You will hear the pump run for a short time, but that is normal.



You should see the **WiFi** symbol on the control panel blinking.

After creating an account, the app will go to **"Connect Purifier"** screen. On an iPhone, you will see the screen at the right.

- On an iPhone®, you will need to manually go to the phone settings to open up the **WiFi** setting.
- On an Android®, you will see a **"Connect to WiFi"** screen on the app. Click on **"Connect to WiFi"** to get to your Android® WiFi settings.



- On the WiFi network setting, select the AquaTru network/water purifier.

Your phone will now connect with the AquaTru water purifier.

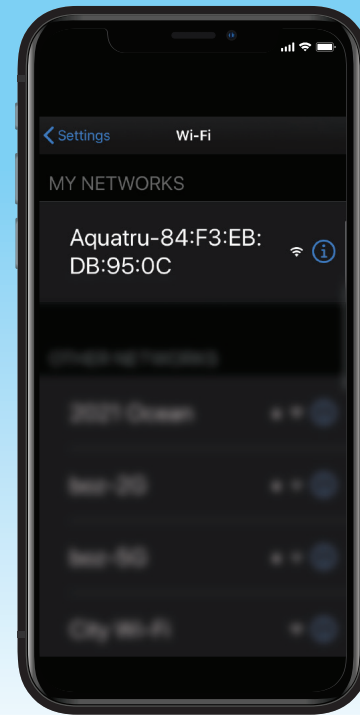
- After connecting to the AquaTru network/water purifier, navigate back to the AquaTru app.

Click on **"I Connected To The WiFi"**.



[AquaTru.com](https://www.aquatru.com)

©2020 AquaTru, LLC.
All Rights Reserved.
070120R2



3 Purifier Details

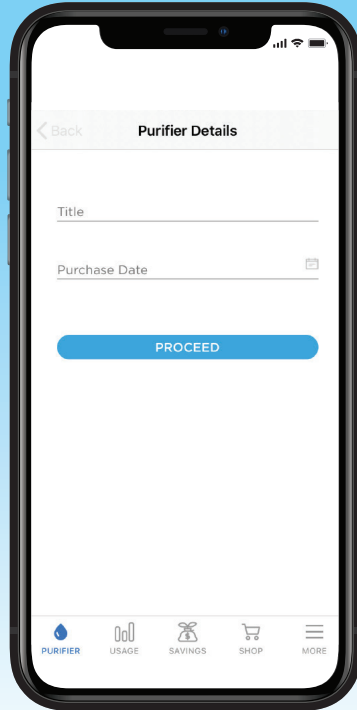
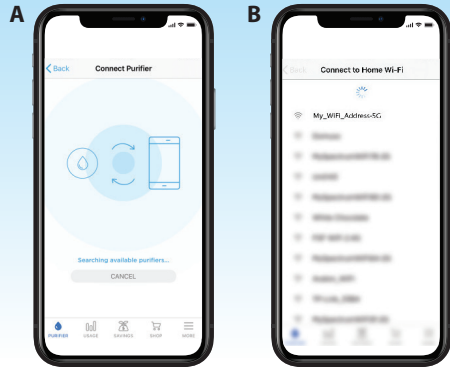
- Next, you need to name your AquaTru and input purchase date. After this, click proceed.

The AquaTru will now search for a home network. (A)

Select the home **WiFi network** you want AquaTru to be connected to. **(B)**

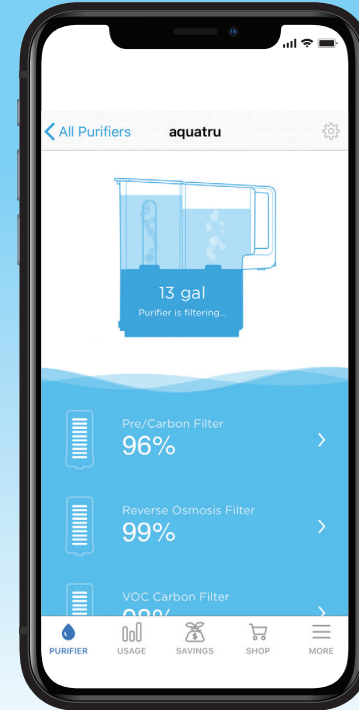
Select the network and input the password for the network.

AquaTru will now connect to your network.



When your AquaTru is fully connected, you will see this screen.

- After you have setup AquaTru to your WiFi and connected to the AquaTru app, **complete the first-time setup of AquaTru by following the user manual.**



AQUA
TRU
connect

WiFi

Quick Guide
Setup

connect